

**April 2009**

PO Box 965 Allentown, PA 18105-0965



Visit our web site at <http://www.ptarmiganskiclub.org>

A non-profit organization founded in 1947 and dedicated to the promotion of all facets of skiing and other winter sports and activities for the education and enjoyment of its members.

**Calendar of Events - Post In a Visible Location:**

Happy Hour: Bill Ortnier, 5:30pm Every Friday  
Volleyball, Allentown Rose Garden, every Tuesday beginning May 5<sup>th</sup>.

----- <b>April</b> -----	-----	-----
Spring Banquet: Curt Johnston	Sat 5:30p	Apr 25
----- <b>May</b> -----	-----	-----
Hike Merrill Creek: Anneliese McArthur	Sun 1:00p	May 3
Hike Rickett's Glen: Bob Clark	Sat 8:30a	May 16

**Unused Blue Mt. EZ-Slope Vouchers**

Reminder from Dale Gogel:

Return all unused Blue Mt. EZ-Slope Vouchers to him ASAP for refund. Call Dale immediately at 610-657-9112 to advise him as to how many. Then mail them to him at Dale Gogel, 4721 Three Mile Lane, Walnutport, Pa 18088

**ANNUAL SPRING BANQUET**

**SATURDAY, APRIL 25, 2009**

BEST WESTERN, ROUTES 22 & 512, BETHLEHEM

5:30 to 11:00	Cash Bar
5:30 to 6:30	Hot Hors d'oeuvres
6:30 to 8:00	Dinner
8:00 to 11:00	DJ and Dancing

DINNER ENTRÉE CHOICES:

PRIME RIB OF BEEF (\$48.00)  
GRILLED FILET OF SALMON (\$47.00)  
CHICKEN CORDON BLEU (\$44.00)

DINNER ACCOMPANIMENTS & DESSERT

Add \$5.00 for non-members. See flyer below for more details.

Send checks payable to Ptarmigan Ski Club, by April 17, 2009, to Mary Ann Bedics, 1664 Best Place, Bethlehem, PA, 18017, [maryannbedics@rcn.com](mailto:maryannbedics@rcn.com), 610-868-8008.

**Volleyball**

Volleyball begins the first Tuesday of May, the 5<sup>th</sup>.

Rose Garden, Allentown.

Contact: Mary Mihalow 610-434-4776

**FRESH TRACKS**

"Skiing has all the happy pop appeal of Top 40 radio, with sing-a-long choruses and that break where you can't wait to hear the guitar. Favorite songs, like favorite ski runs, fill some euphoric, unnamed place within. But those sensations are built on more visceral memories: the first time you saw a certain slope, or felt the edge of a new ski or were blown over by a mountain view. These were the times when you felt a tingle up your spine, and your whole head crackled with electric air."

- Peter Kray, Editorial Director, *Skipress*

Yea... we've all felt it. For me, it was the first time I saw the sunrise hit Lone Peak at Big Sky, MT. Still makes the hair on the back of my neck stand on end. It's like watching Jeanne Weiser's air guitar performance of AC/DC's "You Shook Me." Don't have one of these moments of your own? Get your checks in for the Spring Banquet, I have a feeling you'll see something similar!

It's about that time, gang – soon the skis will be racked and we'll be planning bike rides, volleyball, and summer picnics. I hope everyone had a great season, and has a fresh set of memories to reflect on when it's too hot to go outside. Although my days out didn't reach the "official ski bum" total this year, I had a blast, made some great turns, and enjoyed time on the snow with good friends. I'll need those memories to hold me over 'til next season.

Congratulations to those elected to the 2009/10 Ptarmigan Ski Club Board of Directors:

- Brian Nuss President
- Dave Schnitzler VP Ski Activities
- Mary Ann Bedics Treasurer
- Denise Kern Membership Secretary
- Victoria Perity Board Member (elected)
- Jeanne Weiser Board Member (elected)
- Kris Yerry Board Member (elected)

As President, I will appoint (3) Board Members to fill out the Board of Directors. If you're interested in being a part of the Board, please let me know ASAP so you can be vetted appropriately (we have a very strict guideline to follow).

Happy Spring Skiing...

Brian J. Nuss, *President*, Ptarmigan Ski Club

## **Ski Trips – 2008/2009 Season Recap:**

Elk Mountain – Day Trip:	Fri Jan 9 <sup>th</sup>
EPSC Killington Weekend	Thurs Jan 29 – Sun Feb 1
Kirchberg, Austria – 11 Days:	Fri Jan 30 – Mon Feb 9
Copper Mt. Co. – Week Trip:	Sat Jan 31 – Sat Feb 7
Elk Mountain – Day Trip:	Fri Feb 6 <sup>th</sup>
Steamboat, Co. – Week Trip:	Sat Feb 21 – Sat Feb 28
Sugarbush, Vt. – Bus Trip:	Fri Feb 27 – Mar 1
Hunter Mt, NY Mid-Wk:	Wed Mar 11 – Fri Mar 13

## **Mark Baechle's Copper Mt. Trip Report**

Pennsylvania skiers descended on Copper Mt. Colorado the first week of February, 2009, providing great skiing and great partying. Most of us had never been there, and few realized how huge the mountain was, and how quaint the village was. The days were filled with skiing the 139 well-covered trails, trees, and bowls, mostly in blue sky and sunshine -- we skied 6 days in a row and never even got to all the trails. Every night we explored the dozen or so bars and restaurants, sampling the food, drinks, and live music (we saw Moe Dickson twice that week!), or had our own private party (Superbowl Party, Ground Hog Day Party, Son-Of-A-Beach Party,...). Nobody believed that Cat Skiing was included in the trip, but after doing it multiple times for free, they were smiling. The "gold-level" accommodations proved to be, in the words of one trip member, "the best I have ever had on a club ski trip". Another trip member, who has been to 81 mountains, said that "this might have been the smallest trip I have been on, but it is definitely the best!" As long as Mark gets feedback like that, he will continue to run great trips. Where do you want to go next year? Please let him know at [markt@ptd.net](mailto:markt@ptd.net).

## **Debbie Koder's Sugarbush Trip Report**

Here we come. Well we didn't have enough for a bus, but 16 of us hit the high, wet road, to Sugarbush, Vermont on Friday Feb 27. It rained for most of the 7 hour drive up and we thought for sure we would be skiing on ice all day Saturday....

Saturday the temperature was 5 degrees at the base and somewhere in the negative numbers at the Summit. I don't think anyone dared to ask. The conditions were very cold, very windy and a little on the icy side. They were grooming the trails Saturday morning to make the conditions better. Due to the high winds the scenic Brookside lift was shut down all day. On Sunday we had temperatures of 14 degrees at the base, sunny, no winds and freshly groomed trails with practically no ice at all, it's amazing the difference 1 day can make.

We stayed at the Whitehorse Inn, right across the street from the entrance to Mt. Ellen. Owners Brenda and Todd cooked us the most awesome breakfasts and dinners that we had ever had. All agreed this would be a place to come back too.

We discussed another bus trip next year at the end of Feb. beginning of March 2010 at Okemo, Stratton or Bromley, about a 5 hour drive, so if we don't get enough for a bus, the drive won't be that bad.

## **Hike Merrill Creek – Sun May 3<sup>rd</sup> 1:00 pm**

**Merrill Creek Reservoir** [www.merrillcreek.com](http://www.merrillcreek.com)

34 Merrill Creek Road, Washington NJ

### **FROM RT. 22, TRAVELING EAST:**

- From the toll booth on the Delaware River, 1.8 miles to where Rt. 22 veers to the right and Rt. 57 is straight ahead
- Take Rt. 57 and go 4.6 miles to Montana Road
- Make a left onto Montana Road and go 2 miles
- Bear left at the Y-intersection
- .3 miles make a left turn on Merrill Creek Road
- Boat Ramp is straight ahead and the Visitors Center is down the roadway that veers to the right

Meet at the Visitor's Center and start the hike at 1:00 pm. That gets us done around 4:00 pm.

Afterwards if anyone wants we'll stop at the Key City diner in Phillipsburg.

Contact: Anneliese McArthur, 484-894-1686

## **Hike Rickett's Glen – Sat May 16<sup>th</sup>**

Destination: Rickett's Glen State Park

Date: Sat. May 17<sup>th</sup>, with a rain date the next day.

Plan to meet at 0830 at the K-Mart parking lot on Tilghman St. Departure at 0900 Travel time (one way) about 1.75 hrs.

Plan to picnic, grill, etc. after the hike at the picnic grove by the lake. Much like we did 2 years ago; when we had 26 Ptarmigans present.

More details later.

Contact: Bob Clark, 610-282-4387 [bgclark@epix.net](mailto:bgclark@epix.net)

## **Blue Closing & Tail Gate -Tom Weiser**

Throughout the afternoon of March 22, over forty Ptarmigans participated in tailgate activities to celebrate the closing of Blue Mountain for the season. But first many enjoyed the show of pond skimmers, many who were not fortunate to reach the opposite bank. Just witnessing Chicken Man's gold metal performance was worth the trip.

I sampled many dishes and just loved the potato salad and Cindy's tossed salad, as well as Marilyn's pasta dish. From the grill, Frank's and Cindy's salmon were superb, with Joel's asparagus providing a nice compliment. But having a major sweet tooth, my first place vote goes to Candy's brownies.

See photo below.

## **Hunter Mt. Trip Report – Tom Weiser**

There is much gratification in seeing a Ptarmigan sponsored ski trip succeed and it shows there is an abundance of life remaining in the Club. Tom Weiser is not solely responsible for making Hunter a trip to remember, but it was all thirty-one participants that made it a success.

Some favored Wednesday's soft snow over Thursday's and Friday's colder weather and groomed conditions but it was all positive responses to a great mountain, fine accommodations, and luxury amenities at the Kaatskill Mountain Club. The slope side condominiums, revitalizing hot tubs, and Van Winkle's refreshments, dinner, and hors d'oeuvres were the best.

My slight illness precluded witnessing the activities of Thursday's party nor do I believe there were many with unimpeded facilities to remember; so maybe it best to leave it as.... "What happens on the trip stays on the trip". On Friday morning many provocative revelations surfaced such as undergarment tossing, banister dancing, and excessive alcohol consumption. The pictures that will surface will best describe the action.

Given the positive response of this trip, Windham Mountain with similar terrain and also located in the Catskills could be a future trip.

## **Tee Time Golf Pass: Only 49.95**

To order a Golf Pass, send a check and a self addressed stamped envelope to, Donna Westgate, 2819 Crest Ave North, Allentown PA 18104. Passes may be used once or repeatedly at certain courses. Passes expire at the end of the 2009 season.

## **Monthly Mountain Bike Rides – Sat Apr 25**

That's right Snow bunnies and bunnettes,

Ski season is over (for the most part) – get over it! In fact, rejoice in the coming Spring and Summer weather and get those bikes out, dusted off and ready for action.

I plan to have rides scheduled for the last Saturday of every month and will make announcements in advance of each ride.

We'll have our first "official" ride of the season the day of the Spring Banquet on Saturday, 4/25/09. Which reminds me, don't forget to get your reservations in to Mary Ann Bedics for what promises to be a rip-roaring event. Who knows, maybe things will get as crazy as they did at Hunter Mountain what with DJ Debonnaire Dave, pole dancing, balcony stripping, requests for naked hot tubbing, staying up past 11PM with some goooood sippin' whiskey..... Oops, what happens on the road stays on the road!

Let's meet at Sand Island in Bethlehem for a ride along the Lehigh towpath beginning at 10AM. It'll be a great opportunity to burn some calories and make room for the Banquet feast.

This will be a NO DROP ride - meaning we will ride the pace that is comfortable with the slowest rider and, if a gap forms, we will wait. We can ride whatever distance the group is amenable to. A road bike is not recommended for this trail – mountain or hybrid bikes would be the transport mode of choice.

The ride will be hosted by Dave Schnitzler (610-965-2070, [schnitdj@airproducts.com](mailto:schnitdj@airproducts.com)).

## **Tail Gate Party- Blue Mt. Closing Saturday Mar 22<sup>nd</sup>**



# PTARMIGAN SKI CLUB ANNUAL SPRING BANQUET SATURDAY, APRIL 25, 2009

BEST WESTERN  
300 GATEWAY DRIVE (ROUTES 22 & 512)  
BETHLEHEM, PA  
610-866-5800

5:30 to 11:00 Cash Bar  
5:30 to 6:30 Hot Hors d'oeuvres  
6:30 to 8:00 Dinner  
8:00 to 11:00 DJ and Dancing

## DINNER MENU

**FIRST COURSE:** Caesar Salad with Toasted Pine Nuts, Rolls and Butter

### DINNER ENTRÉE CHOICES:

**PRIME RIB OF BEEF** (\$48.00)

(Queen Cut) Roasted with Crushed Herbs and served with Au Jus

**GRILLED FILET OF SALMON** (\$47.00)

Grilled and served over Spinach with a Citrus and Cilantro Sauce

**CHICKEN CORDON BLEU** (\$44.00)

Breast of Chicken stuffed with Smoked Ham and Baby Swiss, topped with Sherry Sauce

### DINNER ACCOMPANIMENTS:

Roasted Red Bliss Potatoes, Broccoli Spears Polonaise

**DESSERT:** Triple Chocolate Cake, Coffee and Tea Service

Make your reservations on or before April 17, 2009 by sending this form to Mary Ann Bedics, 1664 Best Place, Bethlehem, PA, 18017, [maryannbedics@rcn.com](mailto:maryannbedics@rcn.com), 610-868-8008. Make checks payable to Ptarmigan Ski Club. (Add \$5.00 for non-members.)

---

Name: \_\_\_\_\_ ( ) Beef ( ) Salmon ( ) Chicken

Name: \_\_\_\_\_ ( ) Beef ( ) Salmon ( ) Chicken

Name: \_\_\_\_\_ ( ) Beef ( ) Salmon ( ) Chicken

Name: \_\_\_\_\_ ( ) Beef ( ) Salmon ( ) Chicken

### Thoughts from Brian Nuss



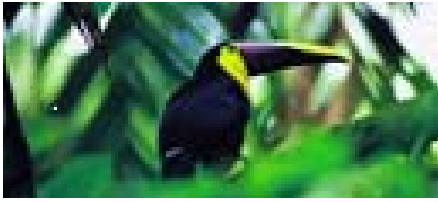
Bored of heliskiing? Convinced catskiing is a cop-out? Try yak skiing. Remote Lands, a high-end travel outfitter in Asia, takes clients via yak into the hills around the Manali ski resort in India, where they're set up in "luxury tents" for the night.

In the morning, the yaks, trailing a long rope, are led up a mountain and attached to a pulley; skiers, waiting below, grab the rope and shake a bucket of pony nuts. Yaks, as everyone in Manali knows, love pony nuts. As they bolt down the hill to get the nuts, skiers are pulled up the slope. We tried a similar setup with the family dog in the fourth grade—but upstate New York pales in comparison to Himachal Pradesh.

- SKI MAGAZINE, MARCH/APRIL 2009

### Photos from Hunter Trip – Many Thanks to Tom Weiser for making the trip happen





# Costa Rica



## 10 day trip - Dates:

Thursday, November 5<sup>th</sup>, to  
Saturday, November 14<sup>th</sup>, 2009

Only:

\$1,862 pp (double occ.)

## PPL - GOEAC invites you to Discover the Wonders of Costa Rica!

The first 2 nights of your trip will include a guided rainforest hike at the Arenal Volcano & Observatory Lodge. After a relaxing afternoon, relax some more while soaking in the warm thermal waters of the Eco Termales Hot Springs. The following 5 nights will be spent in the Central Pacific Region where we will be staying at a 4-star beachfront condo. Here we will explore Carara National Park with another guided hike in this rainforest, and then a jungle river cruise on the Tarcoles River. A quiet river cruise among the mangrove estuary to see huge crocodiles, scarlet macaws, JC lizards and many other exotic birds & plants.

Many other optional tours or activities may be done during your free days.

The last two nights will be spent in the San Jose Region, staying at the beautiful Hotel Bougainvillea that sits on 10 acres of exotic tropical gardens. Our tour includes visiting the Poas Volcano (features one of the World's largest craters and an elfin forest!) La Paz Waterfall Gardens (has 4 breathtaking waterfalls set within primary rainforest, with the world's largest butterfly pavilion, tropical birds, native cats, frogs, serpentarium and a orchid and hummingbird garden), and ending with the Doka Coffee Plantation tour.



**Deposit of \$350 now (to reserve space)**

**Second deposit of \$350 due 6/01/09**

**Final payment (balance) due 9/01/09**

Make Checks Payable to: PPL GOEAC

### Includes:

- o Round trip Air from Newark to San Jose & Back
- o Round Trip \*Transfer Airport/Hotels – San Jose
- o Nine nights accommodations at:
  - Royal Corin Resort (2 nights)
  - Bahia Azul Condominiums (5 nights)
  - Hotel Bougainvillea (2 nights)
- o Guided Morning Rainforest Hike at Arenal Observatory
- o Eco Termales Hot Springs (thermal waters)
- o Guided Morning Rainforest Hike at Carara National Park
- o Jungle River Cruise on the Tarcoles River
- o Guided Rainforest Tram/Canopy Tour with Zip-lining back down.
- o Poas Volcano, La Paz Waterfall Garden, and Doka Coffee Plantation Tour
- o 3 breakfasts, 3 lunches, and 1 dinner per person.
- o English speaking tour guide coordinator with us the whole trip
- o Hotel/Air taxes included - (Costa Rica departure tax not included, approx \$27)

\* All transportation will take place on a 50 passenger modern bus with a driver that stays with us the whole time.



*A canopy tour is a must on any nature lover's "to do" list with the biodiversity exists in the canopy layer.*

*This tour is intended to provide a unique perspective of the flora & fauna of the ecosystem. Bromeliads, toucans, monkeys & sloths all call the forest canopy their home. Panoramic views of distant mountain ranges, volcanoes and oceans make the canopy tour experience unforgettable. (canopy tour up, zip-line down)*

**Get your reservations in early, limited spots available!**

**For more information contact:** Donna Westgate PPL Corp. PL7 2 North 9<sup>th</sup> St Allentown, PA 18101  
dwestgate@pplweb.com office phone (610) 774-4914

Enclosed is my (our) **\$350** per person deposit for Costa Rica Trip, November 5-14, 2009 **\*\*\*Final Payment due by 9/1/09\*\*\***

NAMES \_\_\_\_\_ ROOMING  
WITH \_\_\_\_\_

ADDRESS \_\_\_\_\_ HOME  
PHONE \_\_\_\_\_

SIGNATURE \_\_\_\_\_ DATE: \_\_\_\_\_ E-Mail Address \_\_\_\_\_

**YOUR NAMES SHOULD BE THE SAME AS ON YOUR TRAVEL DOCUMENTS (FOR BOOKING AIRLINE SEATS)**

# PTARMIGAN SKI CLUB – 2008/2009 Membership Application

Please complete this entire form including the date and your signature. Checks should be made payable to **Ptarmigan Ski Club**. Once completed, send form with payment and a self addressed stamped envelope to: Jackie Lulewitz, 855 Yorkshire Road, Bethlehem, PA 18017. Otherwise, you can pick-up your card(s) at our monthly meetings. (If you supply an email address, please use UPPERCASE to avoid errors.)

Last Name: \_\_\_\_\_ First Name: \_\_\_\_\_  
 Spouse: \_\_\_\_\_ Children: \_\_\_\_\_  
 Address: \_\_\_\_\_ City: \_\_\_\_\_  
 Phone: \_\_\_\_\_ State: \_\_\_\_\_ Zip: \_\_\_\_\_  
 Email: \_\_\_\_\_ Sponsored By: \_\_\_\_\_

## Membership Dues:

**New Members & Renewal After 10/31/08:** \$20/Single, \$30/Family    **Renewal Before 10/31/08:** \$16/Single, \$26 Family

## Acknowledgement of Responsibility / Release of Liability:

The Ptarmigan Ski Club is a year-round sports and social club providing a variety of activities for its members. Participation in these activities can involve risk and personal injury. I fully accept and understand these risks and voluntarily assume all risks either known or not readily foreseeable. I agree not to hold the Ptarmigan Ski Club, its officers, board members, or any volunteers, liable for any accident or injury resulting from my participation in any club activity.

Signature: \_\_\_\_\_ Date: \_\_\_\_\_

Signature: \_\_\_\_\_ Date: \_\_\_\_\_

**Note:** Adult member is responsible for each named minor. Each adult must sign.

**Preferred Newsletter Format:**     Email (PDF File)     Hard Copy (via US Mail)

## Demographic Information:

Sex:     Male     Female    Age: \_\_\_\_\_

Marital Status:     Single     Married     Divorced     Other

Social Capital: \_\_\_\_\_  
 (i.e.: what you bring with you and who you are – florist, plumber, kennel, etc)



## How often do you ski each year?

< 10 times     10-20 times     20-30 times     > 30 times

## Where do you like to ski?

Locally     New England     Western US     Canada     Europe     Other

## Additional activities you're interested in:

Downhill Skiing     Week-long Trips     Boating     Golf  
 Cross Country Skiing     Midweek Trips     Hiking     Other: \_\_\_\_\_  
 Snowboarding     Weekend Trips     Biking  
 Racing (competitive/fun)     Bus Trips     Volleyball  
 Rollerblading     Picnics     Happy Hour

## Activities I will help with:

Membership     Publicity/Advertising     Summer Picnics     Website  
 Newsletter     Special Olympics     Banquet/Parties     Other...  
 Programs     Organizing Trips     Hospitality

Visit us online at <http://www.ptarmiganskiclub.org>

**PTARMIGAN SKI CLUB**  
 PO BOX 965  
 ALLENTOWN, PA 18105-0965

Dated Material - Please Expedite

<b>Officers</b>			
President	Brian Nuss	610-807-3580	powder-hound@verizon.net
Vice President, Ski	Dave Schnitzler	610-965-2070	SCHNITDJ@airproducts.com
Vice President, Non-Ski	Mary Laronge	610-737-2349	marylaronge@aol.com
Treasurer	Linny Esterly	484-232-6020	lesterly@ptd.net
Membership Secretary	Jackie Lulewitz	610-865-5722	rolexfj@ptd.net
Recording Secretary	Barb Stephens	610-462-6001	bStephensrealtor@aol.com
<b>Board Members</b>			
	Bill Ortner	610-799-2549	wortner@att.net
	Curt Johnson	610-868-4750	hugdebear@verizon.net
	Jeanne Weiser	610-965-4087	weiser@ptd.net
	Mary Ann Bedics	610-868-8008	maryannbedics@rcn.com
	Kris Yerry	610-837-0917	krisyerry@rcn.com
	Gordon Yerry	610-837-0917	gyerry15@rcn.com
	Victoria Perity	610-737-3178	vperity@mac.com
<b>Newsletter Editor</b>			
	Bill Ortner	610-799-2549	wortner@att.net
<b>Webmaster</b>			
	Joel Derk	610-767-1613	jderk@ptd.net
<b>ASIA Instructors</b>			
	Brian Nuss	610-807-3580	powder-hound@verizon.net
	Ray Cope	610-509-5779	
<b>Advertising</b>			
	Curt Johnston	610-868-4750	hugdebear@verizon.net
<b>Blue Mountain Vouchers</b>			
	Dale Gogel	610-767-1546	dalego@aol.com
<b>Programs</b>			
	Vacant		
<b>Ski Parties</b>			
	Noreen & Dennis Reid	610-837-1780	nerdlr@verizon.net
<b>Club Affiliations:</b>			
Amateur Ski Instructors Assn.	Brian Nuss	610-807-3580	powder-hound@verizon.net
Eastern PA Ski Council	Brian Nuss	610-807-3580	powder-hound@verizon.net
Special Olympics	Dale Gogel	610-767-1546	dalego@aol.com